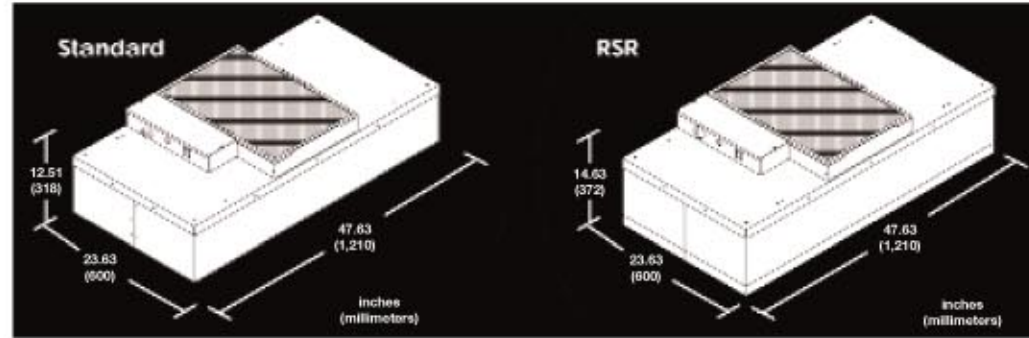


Dimensions

inches (millimeters)

- 2 ft. x 2ft.
23.63 x 23.63 (600 x 600)
- 2 ft. x 3 ft.
23.63 x 35.63 (600 x 905)
- 2 ft. x 3.5 ft.
23.63 x 41.63 (600 x 1057)
- 2 ft. x 4 ft.
23.63 x 47.63 (600 x 1210)



MAC 10 XL HEPA Model 1/5 Hp Motor	HIGH SPEED 120 V, 220 V, 277 V 60/50 Hz Airflow ft/min (m/sec) Watts 60Hz (50Hz)	MEDIUM SPEED 120 V, 220 V, 277 V 60/50 Hz Airflow ft/min (m/sec) Watts 60Hz (50Hz)	LOW SPEED 120 V, 220 V, 277 V 60/50 Hz Airflow ft/min (m/sec) Watts 60Hz (50Hz)	90 ft/min (0.45 m/sec)** 120 V, 220 V, 277 V 60/50 Hz Airflow ft/min (m/sec) Watts 60Hz (50Hz)	70 ft/min (0.35 m/sec)** 120 V, 220 V, 277 V 60/50 Hz Airflow ft/min (m/sec) Watts 60Hz (50Hz)	AVERAGE AIRFLOW @ 90 FPM (m ³ /hr)	UNIT WEIGHT lbs (kg)
---	--	--	---	--	--	--	----------------------------

Standard (STD) Model

2 ft x 4 ft 600 mm x 1,210 mm	140 (.71) 317 (256) watts	120 (.61) 244 (186) watts	100 (.51) 170 (145) watts	90 (.45) 160 (145) watts	70 (.35) 140 (128) watts	644 (1,095)	65 (29)
2 ft x 3.5 ft 600 mm x 1,057 mm	149 (.75) 298 (258) watts	125 (.63) 244 (186) watts	111 (.56) 175 (139) watts	90 (.45) 160 (151) watts	70 (.35) 140 (122) watts	560 (952)	63 (29)
2 ft x 3 ft 600 mm x 905 mm	188 (.95) 294 (248) watts	N/A	N/A	90 (.45) 140 (113) watts	70 (.35) 120 (94) watts	477 (811)	52 (24)
2 ft x 2 ft 600 mm x 600 mm	260 (1.30) 286 (224) watts	N/A	N/A	90 (.45) 72 (67) watts	n/a	310 (527)	41 (19)

Room-Side Replaceable (RSR) Model

2 ft x 4 ft 600 mm x 1,210 mm	120 (.6) 297 (247) watts	96 (.49) 200 (180) watts	80 (.41) 144 (136) watts	90 (.45) 208 (180) watts	70 (.35) 160 (131) watts	644 (1,095)	71 (32)
2 ft x 3.5 ft 600 mm x 1,058 mm	142 (.71) 280 (247) watts	118 (.59) 209 (182) watts	99 (.50) 167 (137) watts	90 (.45) 160 (164) watts	70 (.35) 140 (123) watts	560 (952)	68 (31)
2 ft x 3 ft 600 mm x 905 mm	164 (.82) 268 (238) watts	N/A	N/A	90 (.45) 140 (134) watts	70 (.35) 120 (114) watts	477 (811)	54 (24)
2 ft x 2 ft 600 mm x 600 mm	220 (1.16) 230 (213)watts	N/A	N/A	90 (.45) 98 (88) watts	n/a	310 (527)	44 (20)

* Full-Load Amp 120 V / 60 Hz / 1 Ph = 3.0; 220 V / 50/60 Hz / 1 Ph = 1.5; 277 V / 60 Hz / 1 Ph = 1.2

Custom-sized units are also available.

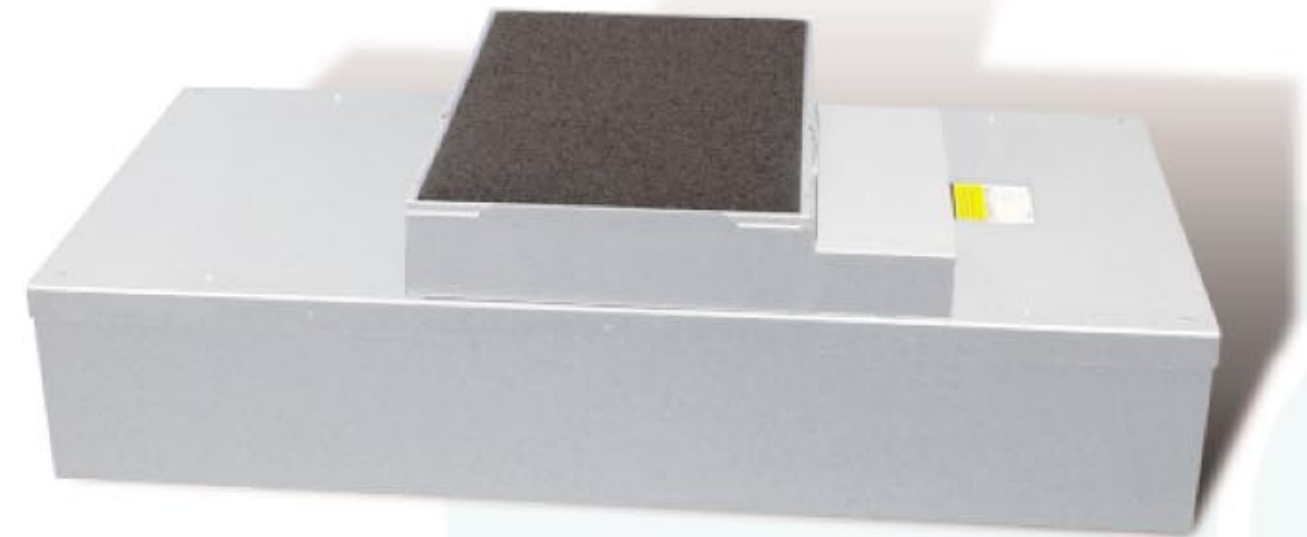
**All test data is measured with an electronic micromanometer with Velgrid attachment; eight readings in unloaded conditions. All test data 90 ft/min (0.45 m/s) and 70 ft/min (0.35 m/s) is measured while using a speed control. The 2 ft x 4 ft (600 mm x 1,210 mm) and 2 ft x 3.5 ft (600 mm x 1,057 mm) units are available with an Optional Speed Control; 2 ft x 3 ft (600 mm x 905 mm) and 2 ft x 2 ft (600 mm x 600 mm) units are standard with Speed Control. Speed Control Conditions: When operating with the speed control, the voltage is reduced and this reduction may result in the amperage exceeding full load amps. This is a safe operating condition.

BTUH: The heat load for each unit can be determined by multiplying the watts by 3.412 to obtain BTUH
 (Example 2 ft x 4 ft [600 mm x 1210 mm] STD @ 90 FPM 60 Hz = 160 watts x 3.412 = 546 BTUH [573 KJ/hr])

Cubic Feet per Minute (Cubic Meters per Hour) is determined by taking the Velgrid average ft/min (m/s) and multiplying by the filter face area to calculate air volume (example: 90 ft/ min [0.45 m/s] x 7.15 ft²[0.66 m²] = 644 ft³/min [1,094 m³/hr]).

MAC 10 XL

Extra-Low Fan Filter Unit



MAC 10 XL

Extra low watts, extra low sound, extra low profile.

As the newest addition to Enviroco's MAC 10 Fan Filter Unit (FFU) family, the MAC 10 XL is the only FFU combining low sound, low watts and a low profile. Measuring only 48 dBA, the MAC 10 XL Standard (2 ft x 4 ft [600 mm x 1,210 mm]) provides one of the lowest sound levels of any FFU in the industry. Running at only 180 watts @90 FPM (.45 m/s [145 Watts for 220V/50 Hz]), the unit uses less energy than traditional FFUs, lowering operating costs. The MAC 10 XL maintains a low profile, measuring less than 13 in.(330mm).



STANDARD FEATURES

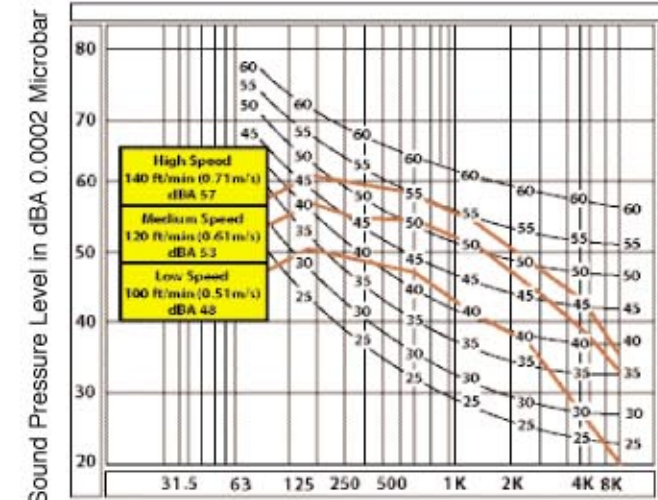
- Low Sound, Low Watts, Low Profile and Low Operating Costs
- Three Speed Switch features low, medium and high settings; standard on all 2 ft x 4 ft (600 mm x 1210 mm) and 2 ft x 3.5 ft (600 mm x 1,057 mm) units
- Solid-State Speed Control standard on 2 ft x 2 ft (600 mm x 600 mm) and 2 ft x 3 ft (600 mm x 905 mm) units
- High Efficiency Particulate Air (HEPA) Filter: 99.99% efficient @ 0.3 micron
- Snap-In Prefilter allows for easy replacement and maintenance
- 0.55 in wg (137 Pa) External Static Capability at 90ft/min (0.45 m/s) with HEPA Filter
- Walkable Plenum (excluding prefilter)
- Meets IEST recommended practices
- UL listed (120 V, 240 V, 277 V)

OPTIONS

- Solid-State Speed Control: available on 2 ft x 4 ft (600 mm x 1,210 mm) and 2 ft x 3.5 ft (600 mm x 1,057 mm) units; allows for a full range of settings
- Room-Side Replacement (RSR) available with gel seal filter element (RSR and RSRE models)
- Ultra Low Penetration Air (ULPA) Filter: 99.9995% efficient @ 0.12 micron
- Airflow Indicator Light allows external monitoring of unit operation
- CE Marked: 230V units available
- A/C Collar (12 in. [305 mm] diameter) allows direct connection to the air conditioning supply
- Fluorescent Light provides illumination with minimal airflow disruption
- Ion Bar neutralizes static charges below the filter
- Exterior: available powder coat painted or stainless steel
- Power Cord provides convenient plug-in connection for non-permanent applications (non-UL)
- Challenge Port offers convenient aerosol challenge and filter testing
- Knife Edge permits easy placement in gel track ceiling grid system
- Custom Sizes and Configurations available: perfect for mini-environment applications

Sound Curve

HIGH, MEDIUM AND LOW SPEED DATA
2 ft. x 4 ft. (600 mm x 1,210 mm)
MAC 10 XL Standard HEPA Filter

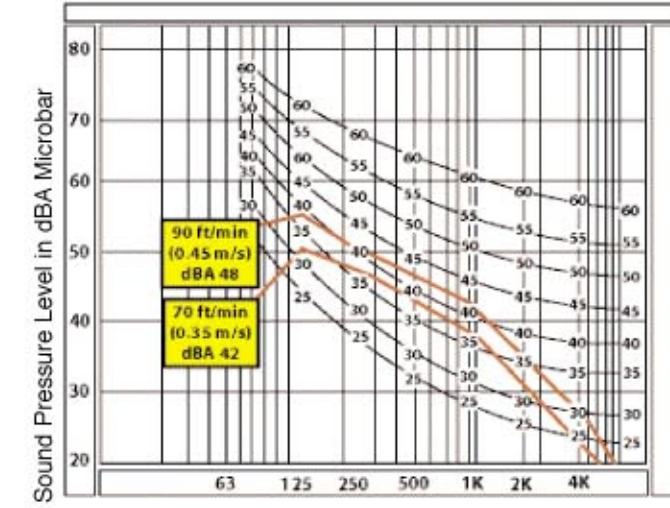


Octave-Band Center Frequencies (Hz)

Sound measured at 30 in. (762 mm) from filter face;
Data applies to all unit voltages.

Sound Curve

90 ft. (0.45 m/s) and 70 ft./min (0.35m/s)
2 ft. x 4 ft. (600 mm x 1,210 mm)
MAC 10 XL Standard HEPA Filter

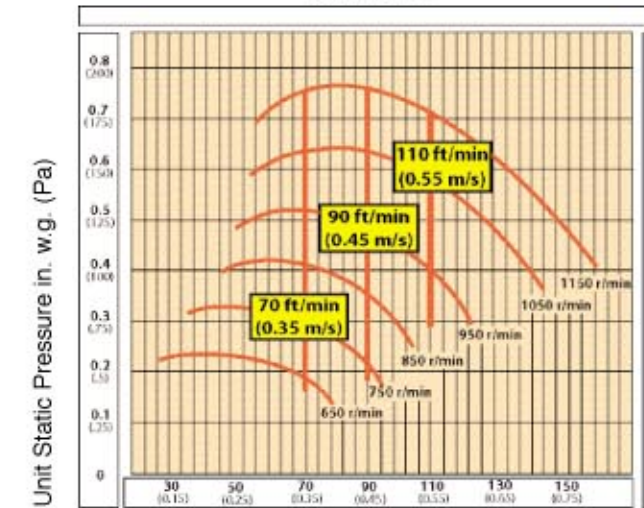


Octave-Band Center Frequencies (Hz)

Sound measured at 30 in. (762 mm) from filter face; applies to all voltages

Fan Curve

2 ft. x 4 ft. (600 mm x 1,210 mm)
MAC 10 XL Standard HEPA Filter
60 Hz Data



Airflow ft/min (m/s)

Airflow measured with Velgrid with a 6 in. (152 mm) standoffs and eight readings across filter face; applies to all voltages.

Measured with solid-state speed control.