

1

2

3

4

A

A

B

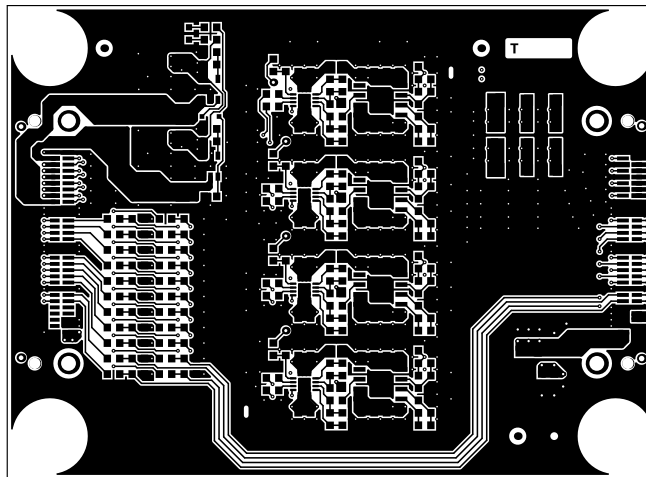
B

C

C

D

D



Top Layer
(Top Layer)

PHYSIK INSTITUT UNIVERSITAET ZUERICH WINTERTHURERSTR 190 CH-8057 ZUERICH SWITZERLAND	SYSTEM: DAMIC-M FRONTEND BOARD (BASED ON ADA4817)		
	BOARD NAME: FE_ADA4817	BOARD NUMBER: PCB221114	REVISION: 1.0
	CREATED: 14-NOV-2022, DANIEL FLORIN	MODIFIED: 23-JAN-2023, DANIEL FLORIN	

1

2

3

4

1

2

3

4

A

A

B

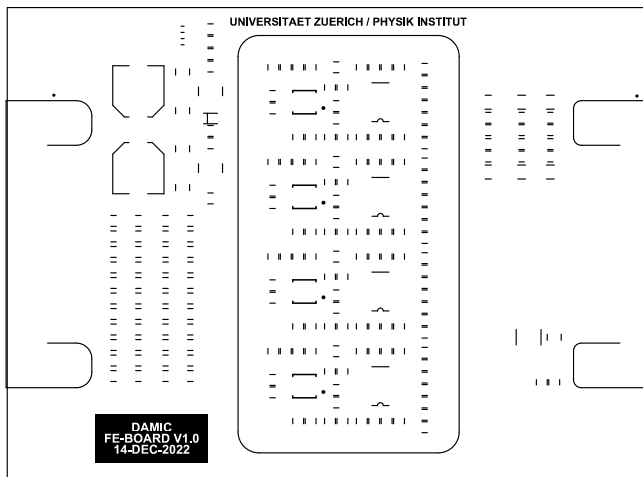
B

C

C

D

D



Top Overlay
(Top Silkscreen Legend, printed on Top of PCB)

PHYSIK INSTITUT UNIVERSITAET ZUERICH WINTERTHURERSTR 190 CH-8057 ZUERICH SWITZERLAND	SYSTEM: DAMIC-M FRONTEND BOARD (BASED ON ADA4817)		
	BOARD NAME: FE_ADA4817	BOARD NUMBER: PCB221114	REVISION: 1.0
	CREATED: 14-NOV-2022, DANIEL FLORIN	MODIFIED: 23-JAN-2023, DANIEL FLORIN	

1

2

3

4

1

2

3

4

A

A

B

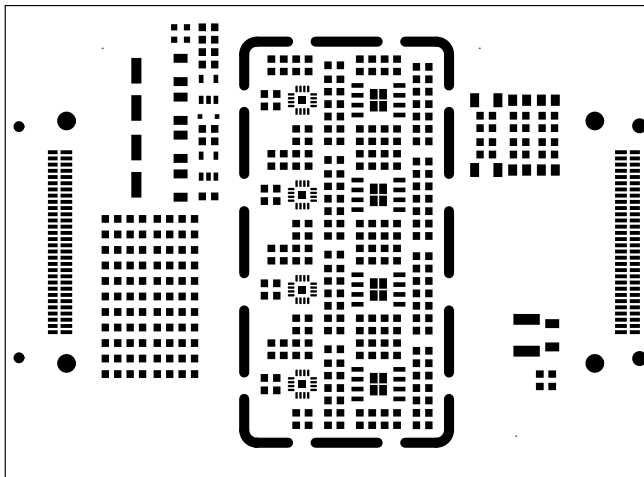
B

C

C

D

D



Top Paste

PHYSIK INSTITUT UNIVERSITAET ZUERICH WINTERTHURERSTR 190 CH-8057 ZUERICH SWITZERLAND	SYSTEM: DAMIC-M FRONTEND BOARD (BASED ON ADA4817)		
	BOARD NAME: FE_ADA4817	BOARD NUMBER: PCB221114	REVISION: 1.0
	CREATED: 14-NOV-2022, DANIEL FLORIN	MODIFIED: 23-JAN-2023, DANIEL FLORIN	

1

2

3

4

1

2

3

4

A

A

B

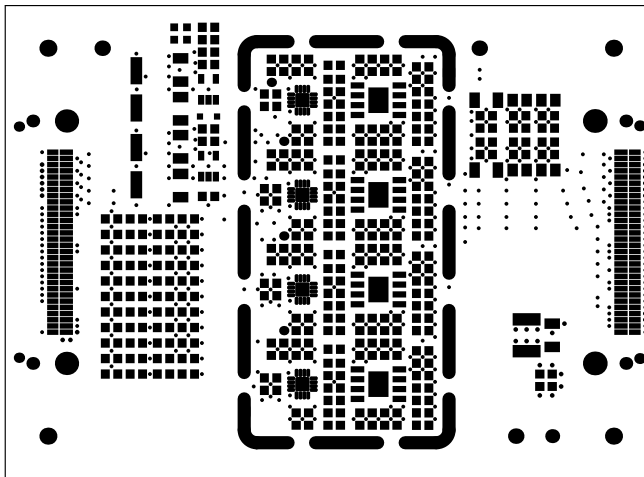
B

C

C

D

D



Top Solder

PHYSIK INSTITUT UNIVERSITAET ZUERICH WINTERTHURERSTR 190 CH-8057 ZUERICH SWITZERLAND	SYSTEM: DAMIC-M FRONTEND BOARD (BASED ON ADA4817)		
	BOARD NAME: FE_ADA4817	BOARD NUMBER: PCB221114	REVISION: 1.0
	CREATED: 14-NOV-2022, DANIEL FLORIN	MODIFIED: 23-JAN-2023, DANIEL FLORIN	

1

2

3

4

1

2

3

4

A

A

B

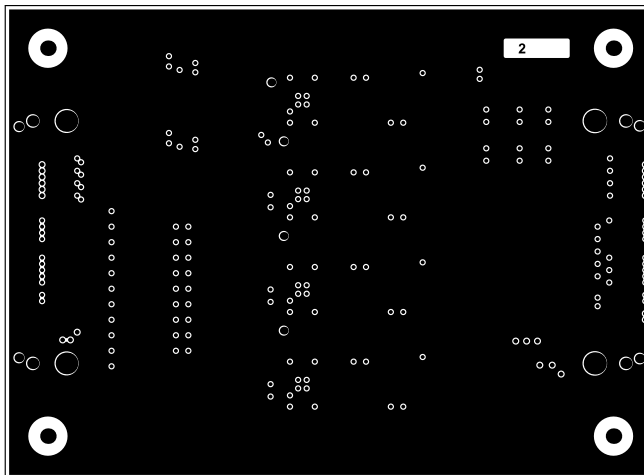
B

C

C

D

D



Internal Layer 1
(InternalLayer1)

PHYSIK INSTITUT UNIVERSITAET ZUERICH WINTERTHURERSTR 190 CH-8057 ZUERICH SWITZERLAND	SYSTEM: DAMIC-M FRONTEND BOARD (BASED ON ADA4817)		
	BOARD NAME: FE_ADA4817	BOARD NUMBER: PCB221114	REVISION: 1.0
	CREATED: 14-NOV-2022, DANIEL FLORIN	MODIFIED: 23-JAN-2023, DANIEL FLORIN	

1

2

3

4

1

2

3

4

A

A

B

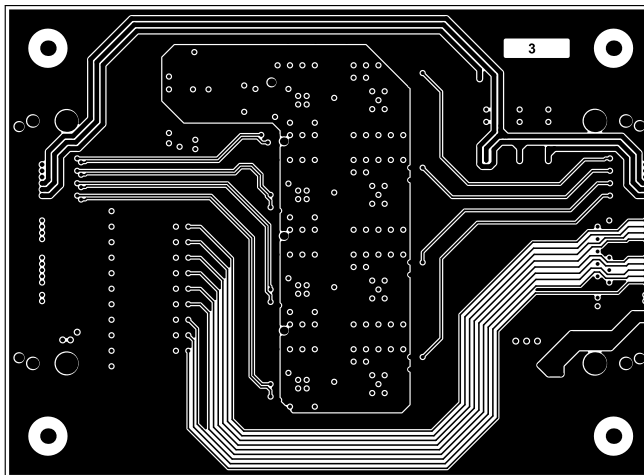
B

C

C

D

D



Internal Layer 2
(InternalLayer2)

PHYSIK INSTITUT UNIVERSITAET ZUERICH WINTERTHURERSTR 190 CH-8057 ZUERICH SWITZERLAND	SYSTEM: DAMIC-M FRONTEND BOARD (BASED ON ADA4817)		
	BOARD NAME: FE_ADA4817	BOARD NUMBER: PCB221114	REVISION: 1.0
	CREATED: 14-NOV-2022, DANIEL FLORIN	MODIFIED: 23-JAN-2023, DANIEL FLORIN	

1

2

3

4

1

2

3

4

A

A

B

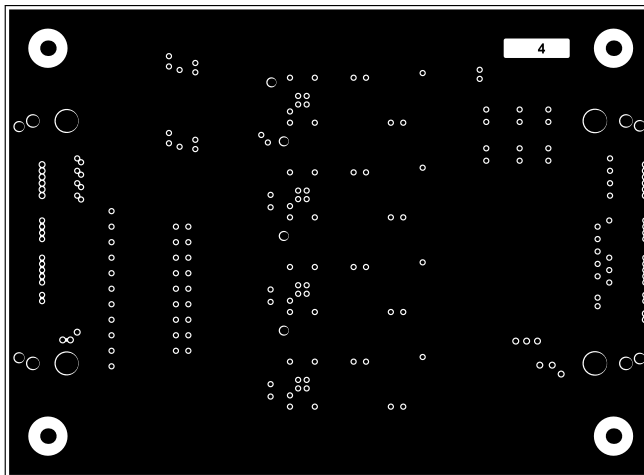
B

C

C

D

D



Internal Layer 3
(InternalLayer3)

PHYSIK INSTITUT UNIVERSITAET ZUERICH WINTERTHURERSTR 190 CH-8057 ZUERICH SWITZERLAND	SYSTEM: DAMIC-M FRONTEND BOARD (BASED ON ADA4817)		
	BOARD NAME: FE_ADA4817	BOARD NUMBER: PCB221114	REVISION: 1.0
	CREATED: 14-NOV-2022, DANIEL FLORIN	MODIFIED: 23-JAN-2023, DANIEL FLORIN	

1

2

3

4

1

2

3

4

A

A

B

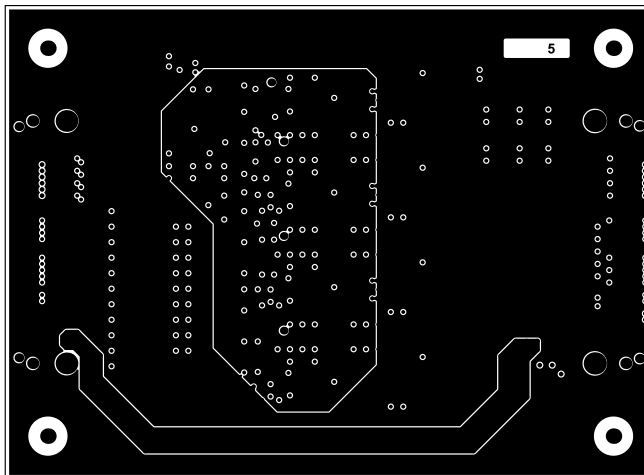
B

C

C

D

D



Internal Layer 4
(InternalLayer4)

PHYSIK INSTITUT UNIVERSITAET ZUERICH WINTERTHURERSTR 190 CH-8057 ZUERICH SWITZERLAND	SYSTEM: DAMIC-M FRONTEND BOARD (BASED ON ADA4817)		
	BOARD NAME: FE_ADA4817	BOARD NUMBER: PCB221114	REVISION: 1.0
	CREATED: 14-NOV-2022, DANIEL FLORIN	MODIFIED: 23-JAN-2023, DANIEL FLORIN	

1

2

3

4

1

2

3

4

A

A

B

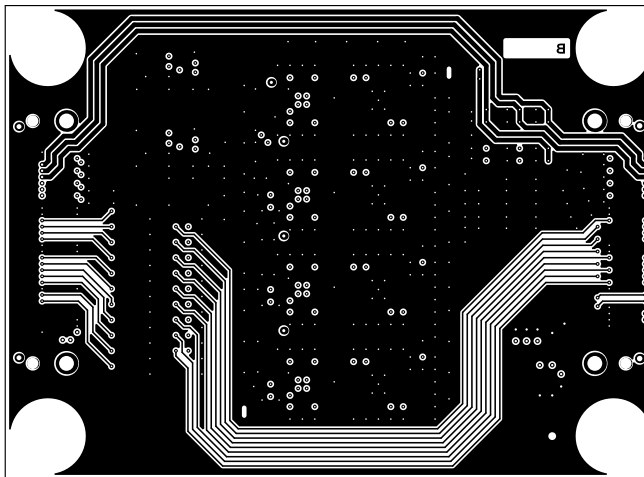
B

C

C

D

D



Bottom Layer
(Bottom Layer)

PHYSIK INSTITUT UNIVERSITAET ZUERICH WINTERTHURERSTR 190 CH-8057 ZUERICH SWITZERLAND	SYSTEM: DAMIC-M FRONTEND BOARD (BASED ON ADA4817)		
	BOARD NAME: FE_ADA4817	BOARD NUMBER: PCB221114	REVISION: 1.0
	CREATED: 14-NOV-2022, DANIEL FLORIN	MODIFIED: 23-JAN-2023, DANIEL FLORIN	

1

2

3

4

1

2

3

4

A

A

B

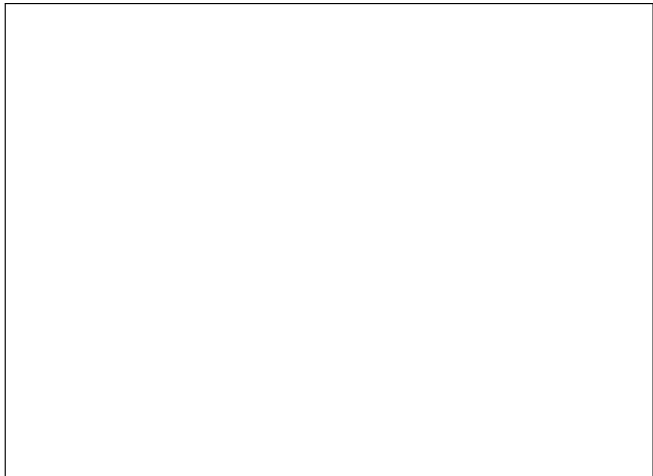
B

C

C

D

D



Bottom Overlay
 (Bottom Silkscreen Legend, printed on Bottom of PCB)

PHYSIK INSTITUT UNIVERSITAET ZUERICH WINTERTHURERSTR 190 CH-8057 ZUERICH SWITZERLAND	SYSTEM: DAMIC-M FRONTEND BOARD (BASED ON ADA4817)		
	BOARD NAME: FE_ADA4817	BOARD NUMBER: PCB221114	REVISION: 1.0
	CREATED: 14-NOV-2022, DANIEL FLORIN	MODIFIED: 23-JAN-2023, DANIEL FLORIN	

1

2

3

4

1

2

3

4

A

A

B

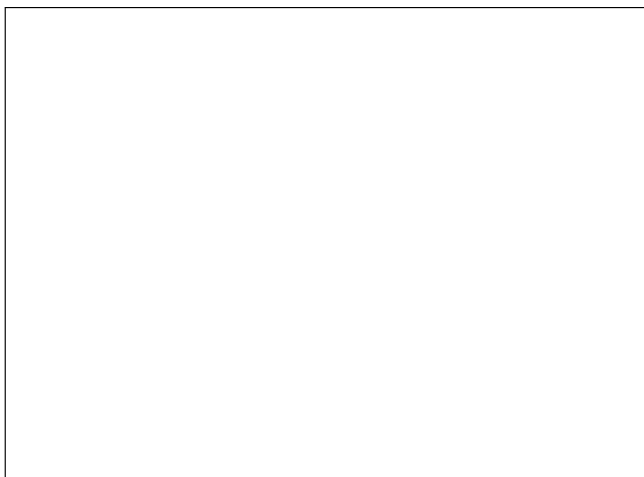
B

C

C

D

D



Bottom Paste

PHYSIK INSTITUT UNIVERSITAET ZUERICH WINTERTHURERSTR 190 CH-8057 ZUERICH SWITZERLAND	SYSTEM: DAMIC-M FRONTEND BOARD (BASED ON ADA4817)		
	BOARD NAME: FE_ADA4817	BOARD NUMBER: PCB221114	REVISION: 1.0
	CREATED: 14-NOV-2022, DANIEL FLORIN	MODIFIED: 23-JAN-2023, DANIEL FLORIN	

1

2

3

4

1

2

3

4

A

A

B

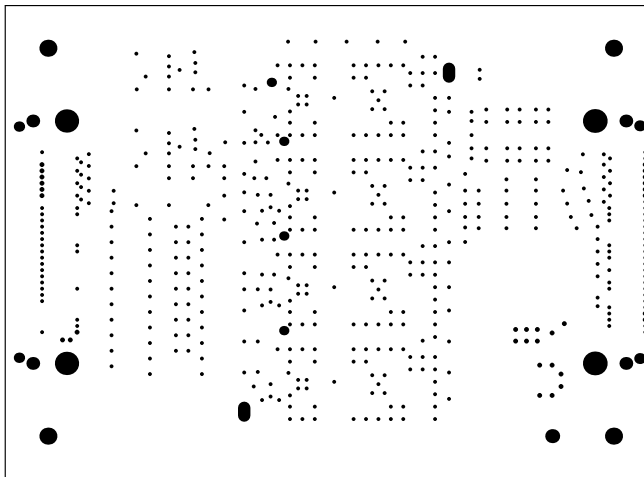
B

C

C

D

D



Bottom Solder

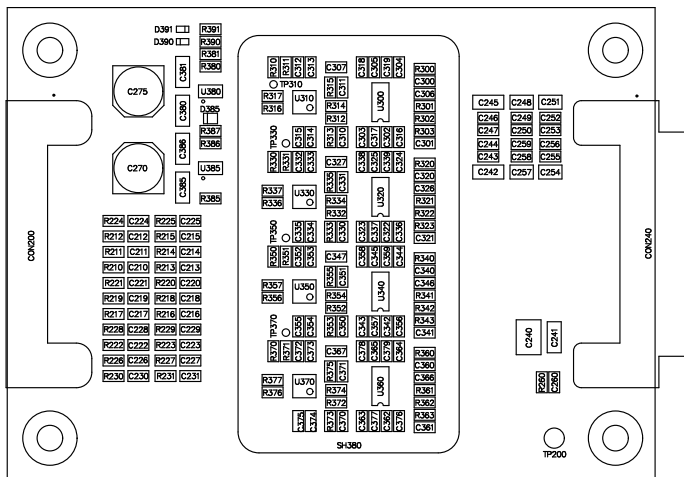
PHYSIK INSTITUT UNIVERSITAET ZUERICH WINTERTHURERSTR 190 CH-8057 ZUERICH SWITZERLAND	SYSTEM: DAMIC-M FRONTEND BOARD (BASED ON ADA4817)		
	BOARD NAME: FE_ADA4817	BOARD NUMBER: PCB221114	REVISION: 1.0
	CREATED: 14-NOV-2022, DANIEL FLORIN	MODIFIED: 23-JAN-2023, DANIEL FLORIN	

1

2

3

4



Top Assembly Drawing
 (Top Assembly Drawing, NOT printed on PCB)

PHYSIK INSTITUT UNIVERSITAET ZUERICH WINTERTHURERSTR 190 CH-8057 ZUERICH SWITZERLAND	SYSTEM: DAMIC-M FRONTEND BOARD (BASED ON ADA4817)		
	BOARD NAME: FE_ADA4817	BOARD NUMBER: PCB221114	REVISION: 1.0
	CREATED: 14-NOV-2022, DANIEL FLORIN	MODIFIED: 23-JAN-2023, DANIEL FLORIN	

1

2

3

4

A

A

B

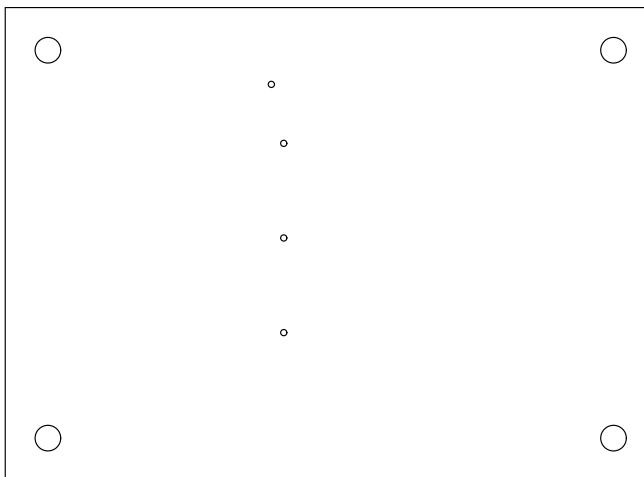
B

C

C

D

D



Bottom Assembly Drawing
 (Bottom Assembly Drawing, NOT printed on PCB)

PHYSIK INSTITUT UNIVERSITAET ZUERICH WINTERTHURERSTR 190 CH-8057 ZUERICH SWITZERLAND	SYSTEM: DAMIC-M FRONTEND BOARD (BASED ON ADA4817)		
	BOARD NAME: FE_ADA4817	BOARD NUMBER: PCB221114	REVISION: 1.0
	CREATED: 14-NOV-2022, DANIEL FLORIN	MODIFIED: 23-JAN-2023, DANIEL FLORIN	

1

2

3

4

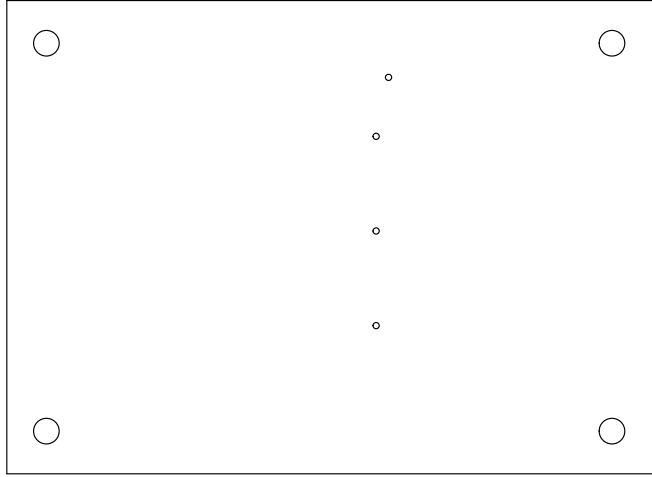
4 3 2 1

A A

B B

C C

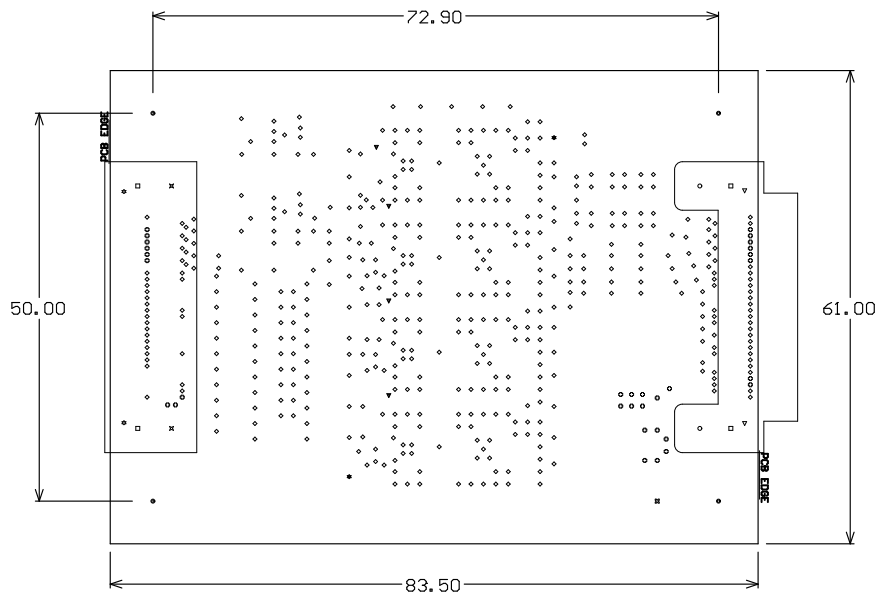
D D



Bottom Assembly Drawing - Mirrored
 (Bottom Assembly Drawing, NOT printed on PCB)

SYSTEM: DAMIC-M FRONTEND BOARD (BASED ON ADA4817)		PHYSIK INSTITUT	
BOARD NUMBER: PCB22114	BOARD NAME: FE_ADA4817	UNIVERSITÄT ZÜRICH	
REVISION: 1.0	MODIFIED: 23-JAN-2023, DANIEL FLORIN	WINTERTHURSTR 190	
	CREATED: 14-NOV-2022, DANIEL FLORIN	CH-8057 ZÜRICH	
		SWITZERLAND	

4 3 2 1



Multi-CB defined stackup

Total approx. 1612um

Top Silkscreen Legend: White
Top Soldermask: Green
Top Surface Finish: NiAu (ENIG)
Top Layer, Copper Weight 35um (Finished)
Prepreg FR-4, 2x2116; 230um
InternalLayer1, Copper Weight 35um
Core FR-4, 300um
InternalLayer2, Copper Weight 35um
Prepreg FR-4, 3x2116; 340um
InternalLayer3, Copper Weight 35um
Core FR-4, 300um
InternalLayer4, Copper Weight 35um
Prepreg FR-4, 2x2116; 230um
Bottom Layer, Copper Weight 35um (Finished)
Top Surface Finish: NiAu (ENIG)
Bottom Soldermask: Green
Bottom Silkscreen Legend: No

Layer Stack (Six Layers)

PCB Fabrication Drawing

Symbol	Count	Hole Size	Hole Length	Routed Path Length	Plated	Hole Type
⊗	1	39.37mil (1.000mm)	—	—	PTH	Round
★	2	23.62mil (0.600mm)	62.99mil (1.600mm)	39.37mil (1.000mm)	PTH	Slot
☆	2	24.80mil (0.630mm)	—	—	PTH	Round
▽	2	27.56mil (0.700mm)	—	—	PTH	Round
⊗	2	75.00mil (1.905mm)	—	—	PTH	Round
○	2	75.20mil (1.910mm)	—	—	PTH	Round
▽	4	15.75mil (0.400mm)	—	—	PTH	Round
□	4	57.09mil (1.450mm)	—	—	NPTH	Round
⊗	4	129.92mil (3.300mm)	—	—	PTH	Round
⊕	31	11.81mil (0.300mm)	—	—	PTH	Round
◇	493	7.87mil (0.200mm)	—	—	PTH	Round
	547 Total					

Slot definitions : Routed Path Length = Calculated from tool start centre position to tool end centre position.
Hole Length = Routed Path Length + Tool Size = Slot length as defined in the PCB layout

Drill Drawing

PHYSIK INSTITUT UNIVERSITAET ZUERICH WINTERTHURERSTR 190 CH-8057 ZUERICH SWITZERLAND	SYSTEM: DAMIC-M FRONTEND BOARD (BASED ON ADA4817)		
	BOARD NAME: FE_ADA4817	BOARD NUMBER: PCB221114	REVISION: 1.0
	CREATED: 14-NOV-2022, DANIEL FLORIN	MODIFIED: 23-JAN-2023, DANIEL FLORIN	