

1

2

3

4

A

A

B

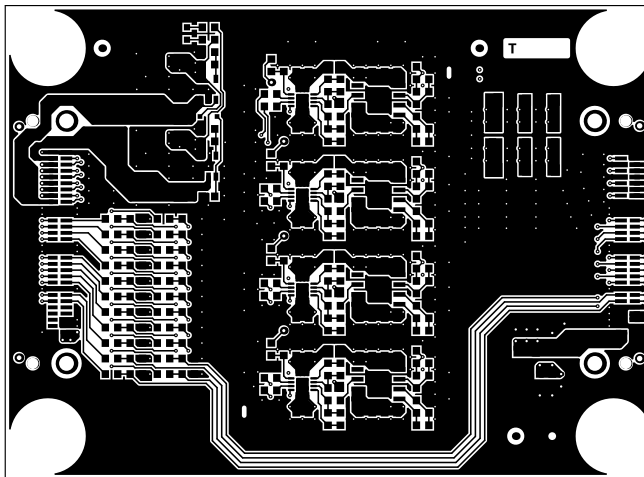
B

C

C

D

D



Top Layer
(Top Layer)

PHYSIK INSTITUT UNIVERSITAET ZUERICH WINTERTHURERSTR 190 CH-8057 ZUERICH SWITZERLAND	SYSTEM: DAMIC-M FRONTEND BOARD (BASED ON ADA4817)		
	BOARD NAME: FE_ADA4817	BOARD NUMBER: PCB221114	REVISION: 1.0
	CREATED: 14-NOV-2022, DANIEL FLORIN	MODIFIED: 14-DEC-2022, DANIEL FLORIN	

1

2

3

4

1

2

3

4

A

A

B

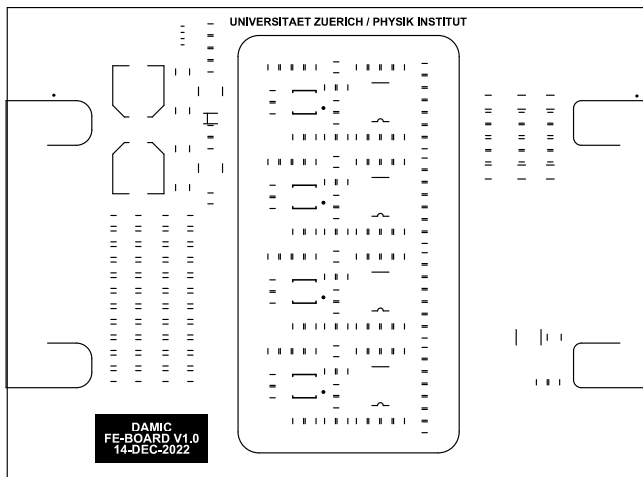
B

C

C

D

D



Top Overlay
(Top Silkscreen Legend, printed on Top of PCB)

PHYSIK INSTITUT UNIVERSITAET ZUERICH WINTERTHURERSTR 190 CH-8057 ZUERICH SWITZERLAND	SYSTEM: DAMIC-M FRONTEND BOARD (BASED ON ADA4817)		
	BOARD NAME: FE_ADA4817	BOARD NUMBER: PCB221114	REVISION: 1.0
	CREATED: 14-NOV-2022, DANIEL FLORIN	MODIFIED: 14-DEC-2022, DANIEL FLORIN	

1

2

3

4

1

2

3

4

A

A

B

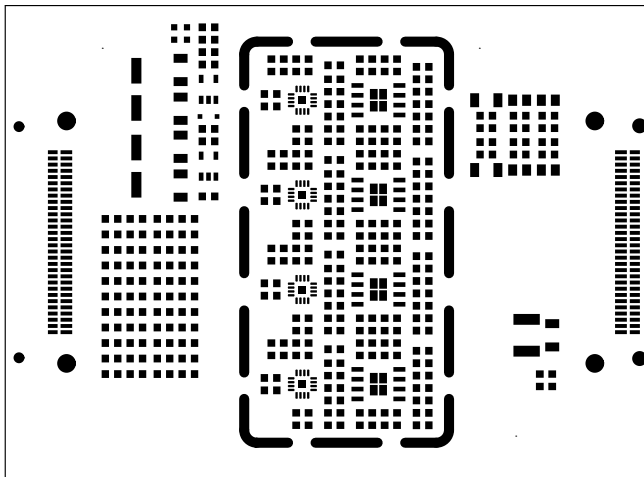
B

C

C

D

D



Top Paste

PHYSIK INSTITUT UNIVERSITAET ZUERICH WINTERTHURERSTR 190 CH-8057 ZUERICH SWITZERLAND	SYSTEM: DAMIC-M FRONTEND BOARD (BASED ON ADA4817)		
	BOARD NAME: FE_ADA4817	BOARD NUMBER: PCB221114	REVISION: 1.0
	CREATED: 14-NOV-2022, DANIEL FLORIN	MODIFIED: 14-DEC-2022, DANIEL FLORIN	

1

2

3

4

1

2

3

4

A

A

B

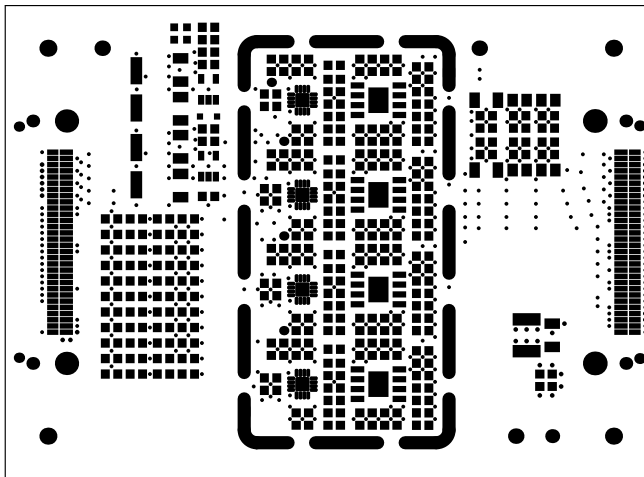
B

C

C

D

D



Top Solder

PHYSIK INSTITUT UNIVERSITAET ZUERICH WINTERTHURERSTR 190 CH-8057 ZUERICH SWITZERLAND	SYSTEM: DAMIC-M FRONTEND BOARD (BASED ON ADA4817)		
	BOARD NAME: FE_ADA4817	BOARD NUMBER: PCB221114	REVISION: 1.0
	CREATED: 14-NOV-2022, DANIEL FLORIN	MODIFIED: 14-DEC-2022, DANIEL FLORIN	

1

2

3

4

1

2

3

4

A

A

B

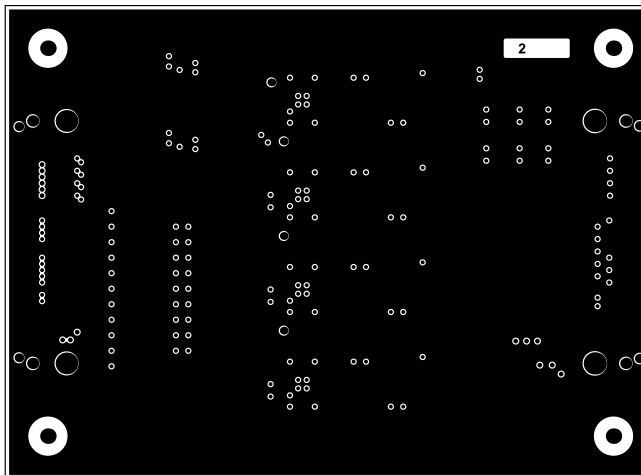
B

C

C

D

D



Internal Layer 1
(InternalLayer1)

PHYSIK INSTITUT UNIVERSITAET ZUERICH WINTERTHURERSTR 190 CH-8057 ZUERICH SWITZERLAND	SYSTEM: DAMIC-M FRONTEND BOARD (BASED ON ADA4817)		
	BOARD NAME: FE_ADA4817	BOARD NUMBER: PCB221114	REVISION: 1.0
	CREATED: 14-NOV-2022, DANIEL FLORIN	MODIFIED: 14-DEC-2022, DANIEL FLORIN	

1

2

3

4

1

2

3

4

A

A

B

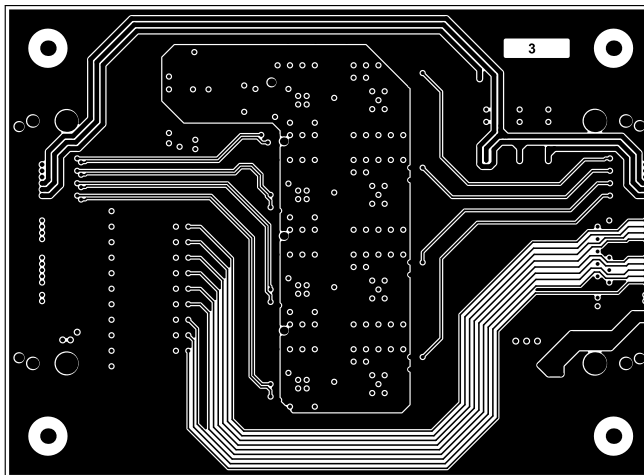
B

C

C

D

D



Internal Layer 2
(InternalLayer2)

PHYSIK INSTITUT UNIVERSITAET ZUERICH WINTERTHURERSTR 190 CH-8057 ZUERICH SWITZERLAND	SYSTEM: DAMIC-M FRONTEND BOARD (BASED ON ADA4817)		
	BOARD NAME: FE_ADA4817	BOARD NUMBER: PCB221114	REVISION: 1.0
	CREATED: 14-NOV-2022, DANIEL FLORIN	MODIFIED: 14-DEC-2022, DANIEL FLORIN	

1

2

3

4

1

2

3

4

A

A

B

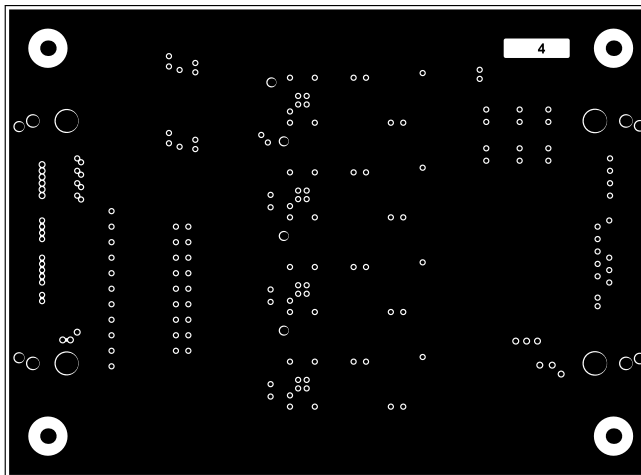
B

C

C

D

D



Internal Layer 3
(InternalLayer3)

PHYSIK INSTITUT UNIVERSITAET ZUERICH WINTERTHURERSTR 190 CH-8057 ZUERICH SWITZERLAND	SYSTEM: DAMIC-M FRONTEND BOARD (BASED ON ADA4817)		
	BOARD NAME: FE_ADA4817	BOARD NUMBER: PCB221114	REVISION: 1.0
CREATED: 14-NOV-2022, DANIEL FLORIN	MODIFIED: 14-DEC-2022, DANIEL FLORIN		

1

2

3

4

1

2

3

4

A

A

B

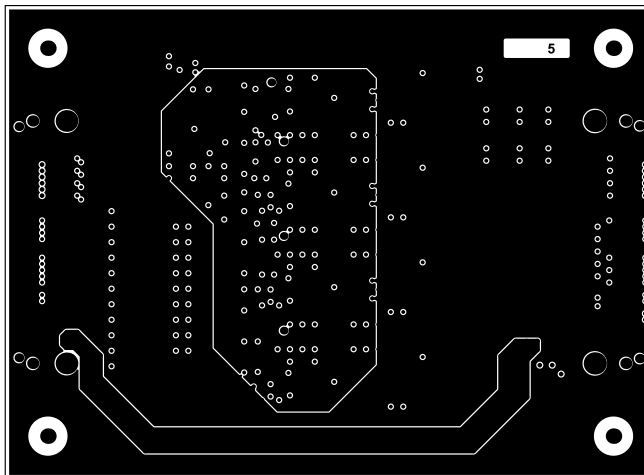
B

C

C

D

D



Internal Layer 4
(InternalLayer4)

PHYSIK INSTITUT UNIVERSITAET ZUERICH WINTERTHURERSTR 190 CH-8057 ZUERICH SWITZERLAND	SYSTEM: DAMIC-M FRONTEND BOARD (BASED ON ADA4817)		
	BOARD NAME: FE_ADA4817	BOARD NUMBER: PCB221114	REVISION: 1.0
	CREATED: 14-NOV-2022, DANIEL FLORIN	MODIFIED: 14-DEC-2022, DANIEL FLORIN	

1

2

3

4

1

2

3

4

A

A

B

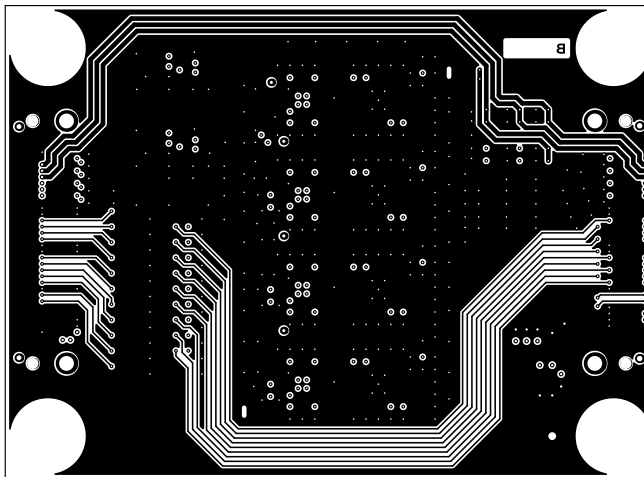
B

C

C

D

D



Bottom Layer
(Bottom Layer)

PHYSIK INSTITUT UNIVERSITAET ZUERICH WINTERTHURERSTR 190 CH-8057 ZUERICH SWITZERLAND	SYSTEM: DAMIC-M FRONTEND BOARD (BASED ON ADA4817)		
	BOARD NAME: FE_ADA4817	BOARD NUMBER: PCB221114	REVISION: 1.0
	CREATED: 14-NOV-2022, DANIEL FLORIN	MODIFIED: 14-DEC-2022, DANIEL FLORIN	

1

2

3

4

1

2

3

4

A

A

B

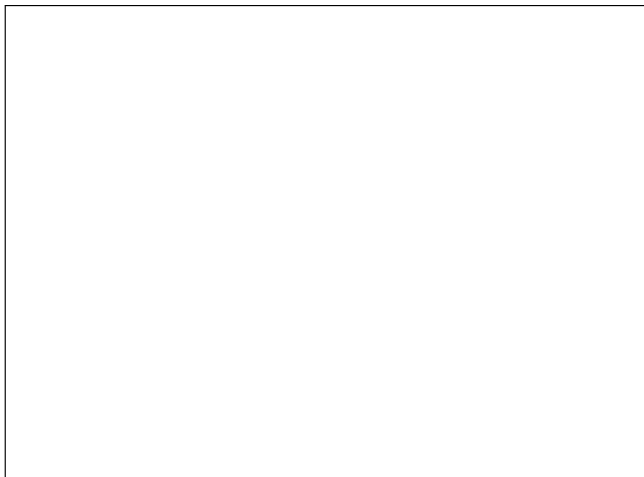
B

C

C

D

D



Bottom Overlay
 (Bottom Silkscreen Legend, printed on Bottom of PCB)

PHYSIK INSTITUT UNIVERSITAET ZUERICH WINTERTHURERSTR 190 CH-8057 ZUERICH SWITZERLAND	SYSTEM: DAMIC-M FRONTEND BOARD (BASED ON ADA4817)		
	BOARD NAME: FE_ADA4817	BOARD NUMBER: PCB221114	REVISION: 1.0
	CREATED: 14-NOV-2022, DANIEL FLORIN	MODIFIED: 14-DEC-2022, DANIEL FLORIN	

1

2

3

4

1

2

3

4

A

A

B

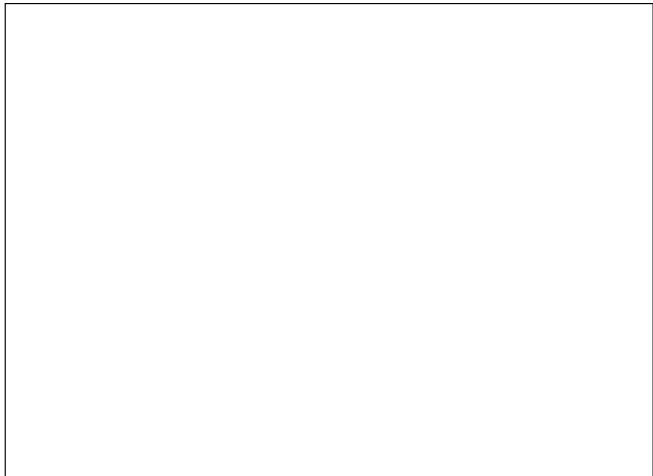
B

C

C

D

D



Bottom Paste

PHYSIK INSTITUT UNIVERSITAET ZUERICH WINTERTHURERSTR 190 CH-8057 ZUERICH SWITZERLAND	SYSTEM: DAMIC-M FRONTEND BOARD (BASED ON ADA4817)		
	BOARD NAME: FE_ADA4817	BOARD NUMBER: PCB221114	REVISION: 1.0
	CREATED: 14-NOV-2022, DANIEL FLORIN	MODIFIED: 14-DEC-2022, DANIEL FLORIN	

1

2

3

4

1

2

3

4

A

A

B

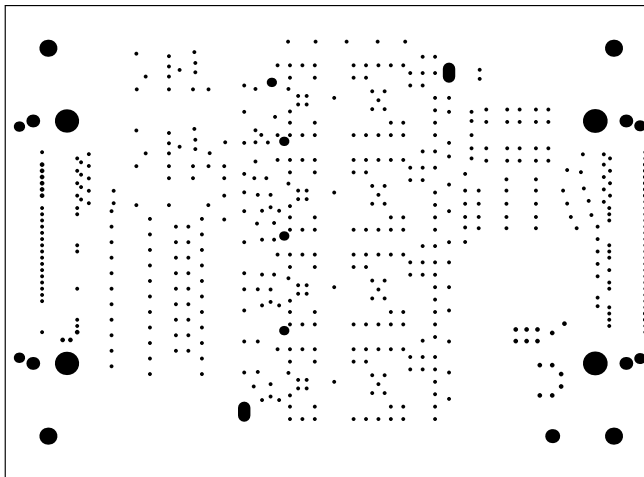
B

C

C

D

D



Bottom Solder

PHYSIK INSTITUT UNIVERSITAET ZUERICH WINTERTHURERSTR 190 CH-8057 ZUERICH SWITZERLAND	SYSTEM: DAMIC-M FRONTEND BOARD (BASED ON ADA4817)		
	BOARD NAME: FE_ADA4817	BOARD NUMBER: PCB221114	REVISION: 1.0
	CREATED: 14-NOV-2022, DANIEL FLORIN	MODIFIED: 14-DEC-2022, DANIEL FLORIN	

1

2

3

4

1

2

3

4

A

A

B

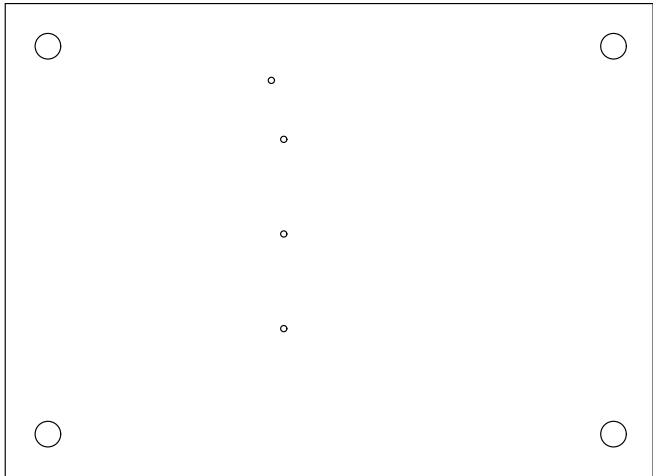
B

C

C

D

D



Bottom Assembly Drawing
 (Bottom Assembly Drawing, NOT printed on PCB)

PHYSIK INSTITUT UNIVERSITAET ZUERICH WINTERTHURERSTR 190 CH-8057 ZUERICH SWITZERLAND	SYSTEM: DAMIC-M FRONTEND BOARD (BASED ON ADA4817)		
	BOARD NAME: FE_ADA4817	BOARD NUMBER: PCB221114	REVISION: 1.0
	CREATED: 14-NOV-2022, DANIEL FLORIN	MODIFIED: 14-DEC-2022, DANIEL FLORIN	

1

2

3

4

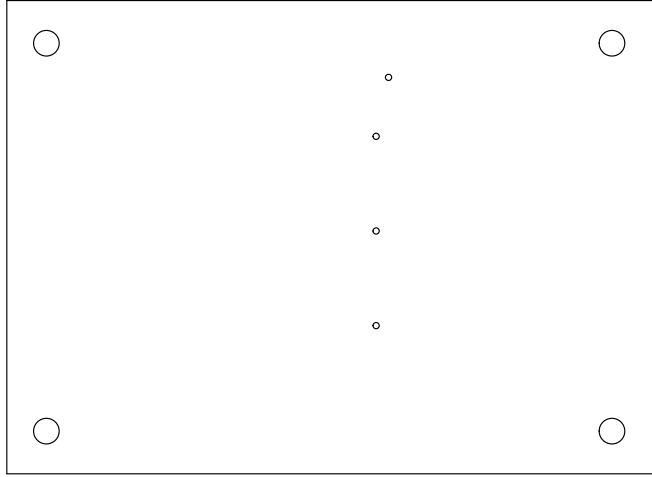
4 3 2 1

A A

B B

C C

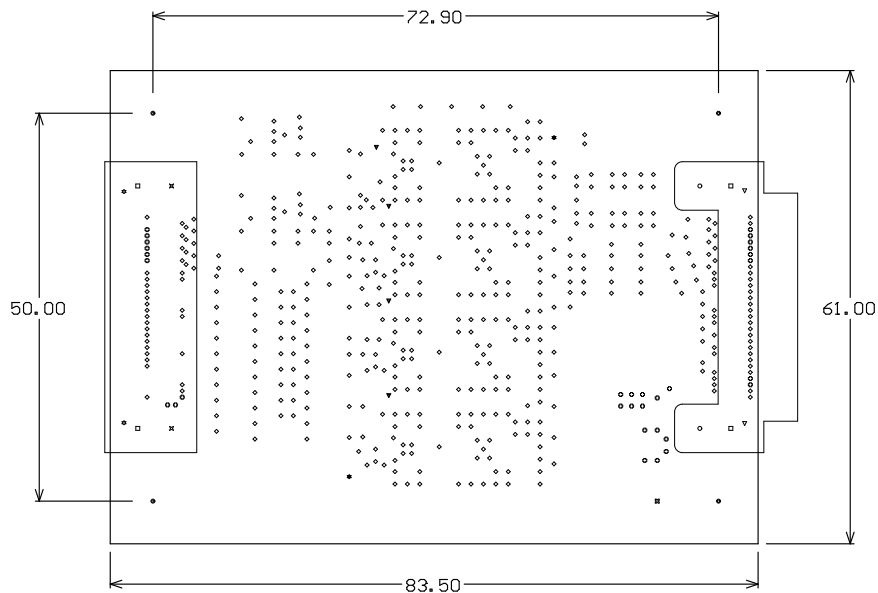
D D



Bottom Assembly Drawing - Mirrored
 (Bottom Assembly Drawing, NOT printed on PCB)

SWITZERLAND CH-8057 ZÜRICH WINTERTHURSTR 100 UNIVERSITÄT ZÜRICH		PHYSIK INSTITUT	
14-NOV-2022, DANIEL FLORIN CREATED:		14-DEC-2022, DANIEL FLORIN MODIFIED:	
FE_ADA4817 BOARD NAME:	PCB22114 BOARD NUMBER:	1.0 REVISION:	
DAMIC-M FRONTEND BOARD (BASED ON ADA4817) SYSTEM:			

4 3 2 1



PCB Fabrication Drawing

Symbol	Count	Hole Size	Hole Length	Routed Path Length	Plated	Hole Type
⊗	1	1.000mm (39.37mil)	—	—	PTH	Round
★	2	0.600mm (23.62mil)	1.600mm (62.99mil)	1.000mm (39.37mil)	PTH	Slot
☆	2	0.630mm (24.80mil)	—	—	PTH	Round
▽	2	0.700mm (27.56mil)	—	—	PTH	Round
⊗	2	1.905mm (75.00mil)	—	—	PTH	Round
○	2	1.910mm (75.20mil)	—	—	PTH	Round
▽	4	0.400mm (15.75mil)	—	—	PTH	Round
□	4	1.450mm (57.09mil)	—	—	NPTH	Round
⊗	4	3.300mm (129.92mil)	—	—	PTH	Round
⊕	31	0.300mm (11.81mil)	—	—	PTH	Round
◇	493	0.200mm (7.87mil)	—	—	PTH	Round
	547 Total					

Slot definitions : Routed Path Length = Calculated from tool start centre position to tool end centre position.
Hole Length = Routed Path Length + Tool Size = Slot length as defined in the PCB layout

Total approx. 1612um

Top Silkscreen Legend: White
Top Soldermask: Green
Top Surface Finish: NiAu (ENIG)
Top Layer, Copper Weight 35um (Finished)
Prepreg FR-4, 2x2116; 230um
InternalLayer1, Copper Weight 35um
Core FR-4, 300um
InternalLayer2, Copper Weight 35um
Prepreg FR-4, 3x2116; 340um
InternalLayer3, Copper Weight 35um
Core FR-4, 300um
InternalLayer4, Copper Weight 35um
Prepreg FR-4, 2x2116; 230um
Bottom Layer, Copper Weight 35um (Finished)
Top Surface Finish: NiAu (ENIG)
Bottom Soldermask: Green
Bottom Silkscreen Legend: No

Layer Stack

Drill Drawing

PHYSIK INSTITUT UNIVERSITAET ZUERICH WINTERTHURERSTR 190 CH-8057 ZUERICH SWITZERLAND	SYSTEM: DAMIC-M FRONTEND BOARD (BASED ON ADA4817)		
	BOARD NAME: FE_ADA4817	BOARD NUMBER: PCB221114	REVISION: 1.0
	CREATED: 14-NOV-2022, DANIEL FLORIN	MODIFIED: 14-DEC-2022, DANIEL FLORIN	