

1

2

3

4

A

A

B

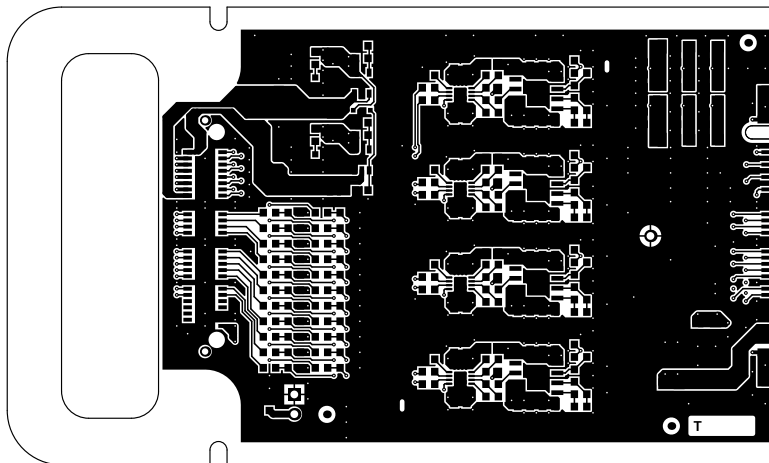
B

C

C

D

D



Top Layer
(Top Layer)

PHYSIK INSTITUT UNIVERSITAET ZUERICH WINTERTHURERSTR 190 CH-8057 ZUERICH SWITZERLAND	SYSTEM: DAMIC-M FRONTEND BOARD (BASED ON ADA4817), MK2		
	BOARD NAME: FE_ADA4817_MK2	BOARD NUMBER: PCB240220	REVISION: 1.1
	CREATED: 20-FEB-2024, DANIEL FLORIN	MODIFIED: 17-OCT-2024, DANIEL FLORIN	

1

2

3

4

1

2

3

4

A

A

B

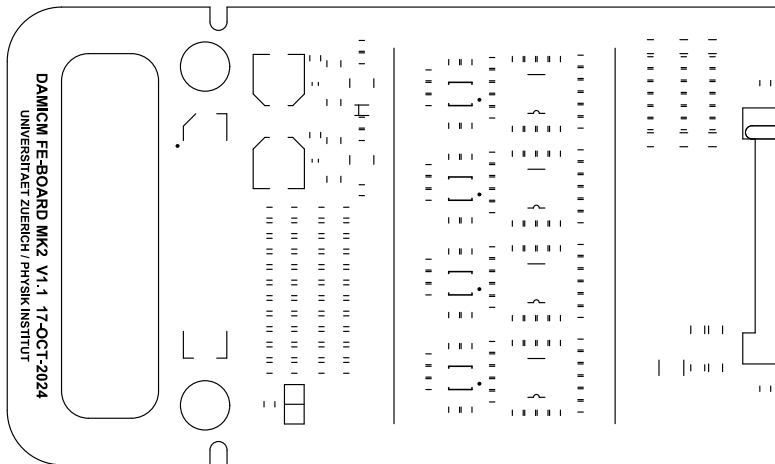
B

C

C

D

D



Top Overlay
 (Top Silkscreen Legend, printed on Top of PCB)

PHYSIK INSTITUT UNIVERSITAET ZUERICH WINTERTHURERSTR 190 CH-8057 ZUERICH SWITZERLAND	SYSTEM: DAMIC-M FRONTEND BOARD (BASED ON ADA4817), MK2		
	BOARD NAME: FE_ADA4817_MK2	BOARD NUMBER: PCB240220	REVISION: 1.1
	CREATED: 20-FEB-2024, DANIEL FLORIN	MODIFIED: 17-OCT-2024, DANIEL FLORIN	

1

2

3

4

1

2

3

4

A

A

B

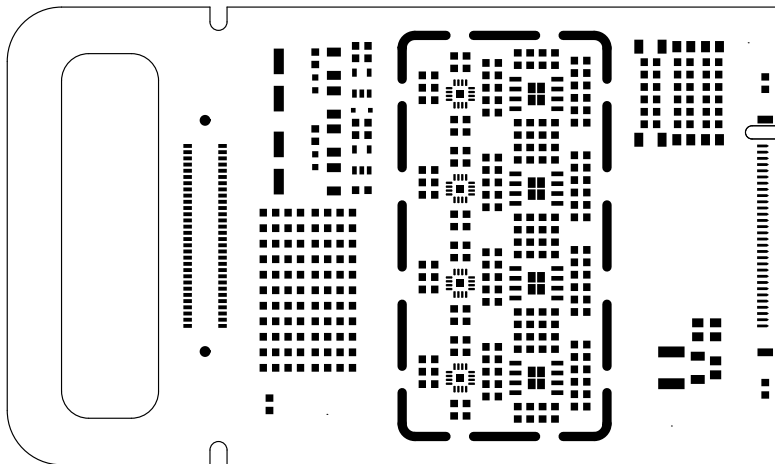
B

C

C

D

D



Top Paste

PHYSIK INSTITUT UNIVERSITAET ZUERICH WINTERTHURERSTR 190 CH-8057 ZUERICH SWITZERLAND	SYSTEM: DAMIC-M FRONTEND BOARD (BASED ON ADA4817), MK2		
	BOARD NAME: FE_ADA4817_MK2	BOARD NUMBER: PCB240220	REVISION: 1.1
	CREATED: 20-FEB-2024, DANIEL FLORIN	MODIFIED: 17-OCT-2024, DANIEL FLORIN	

1

2

3

4

1

2

3

4

A

A

B

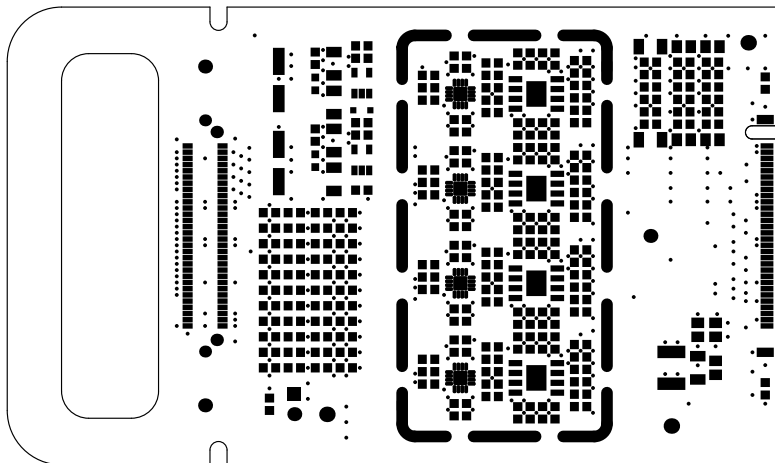
B

C

C

D

D



Top Solder

PHYSIK INSTITUT
 UNIVERSITAET ZUERICH
 WINTERTHURERSTR 190
 CH-8057 ZUERICH
 SWITZERLAND

SYSTEM: DAMIC-M FRONTEND BOARD (BASED ON ADA4817), MK2		
BOARD NAME: FE_ADA4817_MK2	BOARD NUMBER: PCB240220	REVISION: 1.1
CREATED: 20-FEB-2024, DANIEL FLORIN	MODIFIED: 17-OCT-2024, DANIEL FLORIN	

1

2

3

4

1

2

3

4

A

A

B

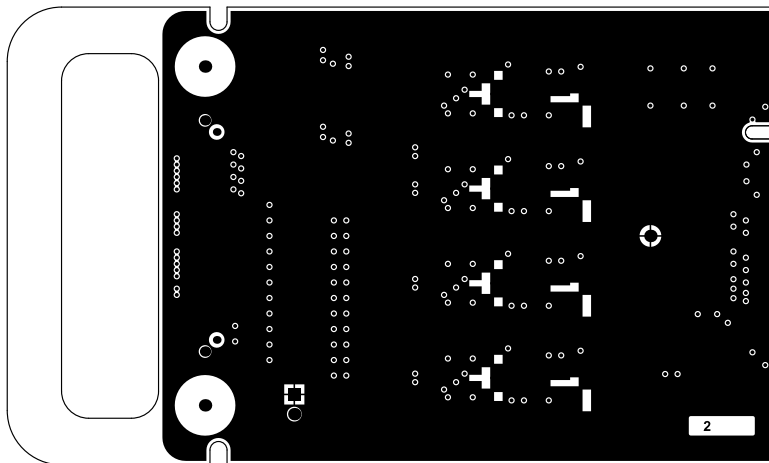
B

C

C

D

D



Internal Layer 1
(InternalLayer1)

PHYSIK INSTITUT UNIVERSITAET ZUERICH WINTERTHURERSTR 190 CH-8057 ZUERICH SWITZERLAND	SYSTEM: DAMIC-M FRONTEND BOARD (BASED ON ADA4817), MK2		
	BOARD NAME: FE_ADA4817_MK2	BOARD NUMBER: PCB240220	REVISION: 1.1
	CREATED: 20-FEB-2024, DANIEL FLORIN	MODIFIED: 17-OCT-2024, DANIEL FLORIN	

1

2

3

4

1

2

3

4

A

A

B

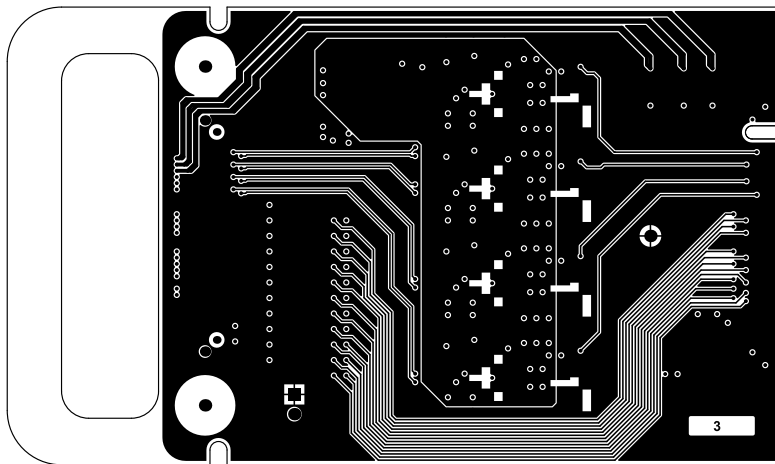
B

C

C

D

D



Internal Layer 2
(InternalLayer2)

PHYSIK INSTITUT UNIVERSITAET ZUERICH WINTERTHURERSTR 190 CH-8057 ZUERICH SWITZERLAND	SYSTEM: DAMIC-M FRONTEND BOARD (BASED ON ADA4817), MK2		
	BOARD NAME: FE_ADA4817_MK2	BOARD NUMBER: PCB240220	REVISION: 1.1
	CREATED: 20-FEB-2024, DANIEL FLORIN	MODIFIED: 17-OCT-2024, DANIEL FLORIN	

1

2

3

4

1

2

3

4

A

A

B

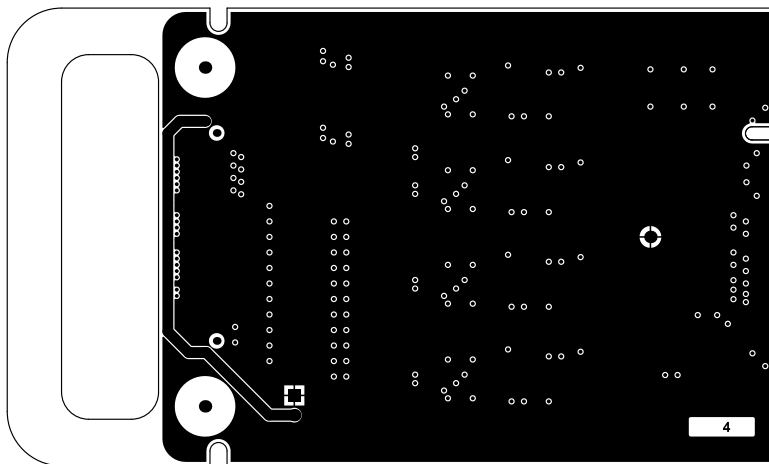
B

C

C

D

D



Internal Layer 3
(InternalLayer3)

PHYSIK INSTITUT UNIVERSITAET ZUERICH WINTERTHURERSTR 190 CH-8057 ZUERICH SWITZERLAND	SYSTEM: DAMIC-M FRONTEND BOARD (BASED ON ADA4817), MK2		
	BOARD NAME: FE_ADA4817_MK2	BOARD NUMBER: PCB240220	REVISION: 1.1
	CREATED: 20-FEB-2024, DANIEL FLORIN	MODIFIED: 17-OCT-2024, DANIEL FLORIN	

1

2

3

4

1

2

3

4

A

A

B

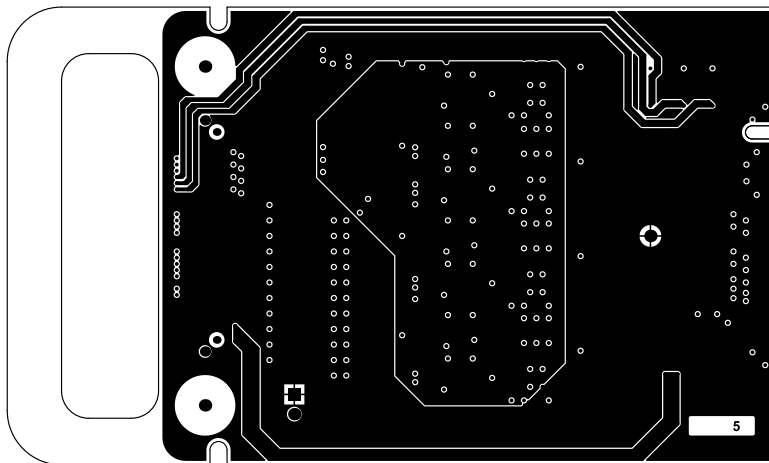
B

C

C

D

D



Internal Layer 4
(InternalLayer4)

PHYSIK INSTITUT UNIVERSITAET ZUERICH WINTERTHURERSTR 190 CH-8057 ZUERICH SWITZERLAND	SYSTEM: DAMIC-M FRONTEND BOARD (BASED ON ADA4817), MK2		
	BOARD NAME: FE_ADA4817_MK2	BOARD NUMBER: PCB240220	REVISION: 1.1
	CREATED: 20-FEB-2024, DANIEL FLORIN	MODIFIED: 17-OCT-2024, DANIEL FLORIN	

1

2

3

4

1

2

3

4

A

A

B

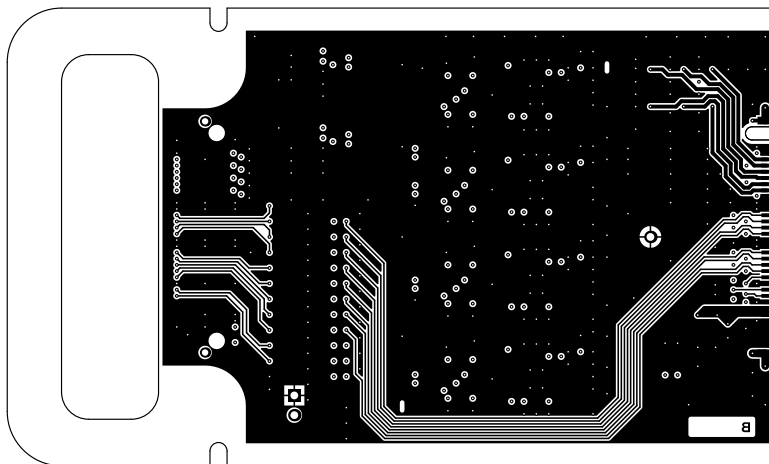
B

C

C

D

D



Bottom Layer
(Bottom Layer)

PHYSIK INSTITUT UNIVERSITAET ZUERICH WINTERTHURERSTR 190 CH-8057 ZUERICH SWITZERLAND	SYSTEM: DAMIC-M FRONTEND BOARD (BASED ON ADA4817), MK2		
	BOARD NAME: FE_ADA4817_MK2	BOARD NUMBER: PCB240220	REVISION: 1.1
	CREATED: 20-FEB-2024, DANIEL FLORIN	MODIFIED: 17-OCT-2024, DANIEL FLORIN	

1

2

3

4

1

2

3

4

A

A

B

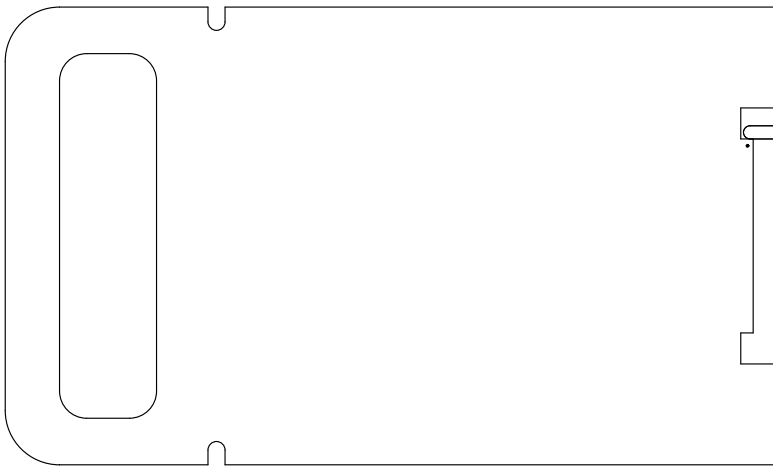
B

C

C

D

D



Bottom Overlay
 (Bottom Silkscreen Legend, NOT printed on PCB)

PHYSIK INSTITUT UNIVERSITAET ZUERICH WINTERTHURERSTR 190 CH-8057 ZUERICH SWITZERLAND	SYSTEM: DAMIC-M FRONTEND BOARD (BASED ON ADA4817), MK2		
	BOARD NAME: FE_ADA4817_MK2	BOARD NUMBER: PCB240220	REVISION: 1.1
	CREATED: 20-FEB-2024, DANIEL FLORIN	MODIFIED: 17-OCT-2024, DANIEL FLORIN	

1

2

3

4

1

2

3

4

A

A

B

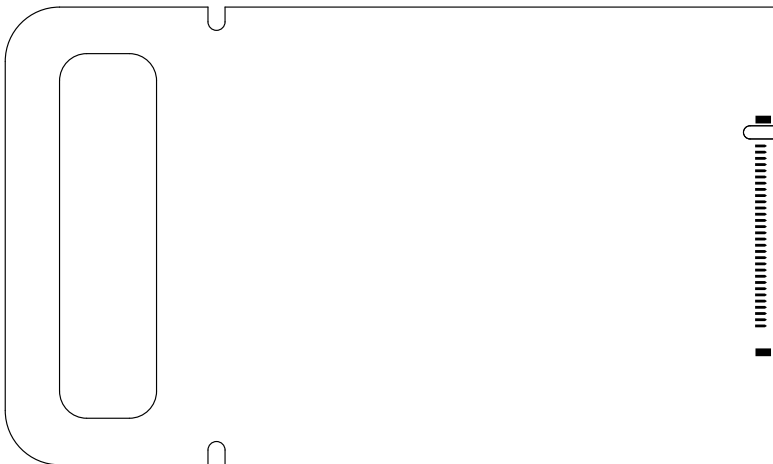
B

C

C

D

D



Bottom Paste

PHYSIK INSTITUT UNIVERSITAET ZUERICH WINTERTHURERSTR 190 CH-8057 ZUERICH SWITZERLAND	SYSTEM: DAMIC-M FRONTEND BOARD (BASED ON ADA4817), MK2		
	BOARD NAME: FE_ADA4817_MK2	BOARD NUMBER: PCB240220	REVISION: 1.1
	CREATED: 20-FEB-2024, DANIEL FLORIN	MODIFIED: 17-OCT-2024, DANIEL FLORIN	

1

2

3

4

1

2

3

4

A

A

B

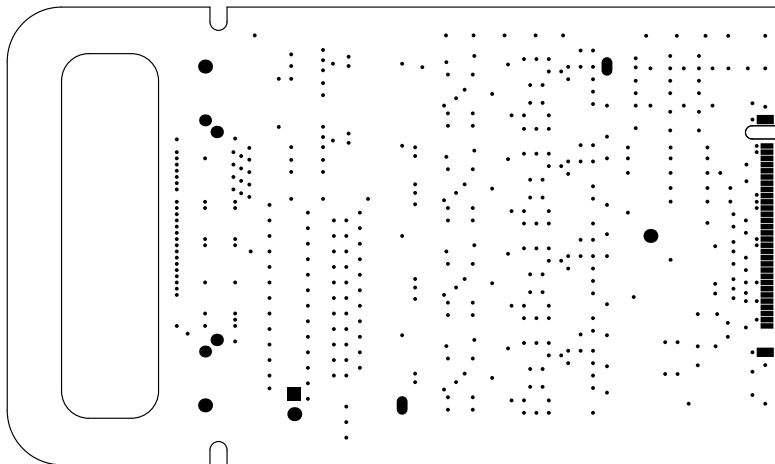
B

C

C

D

D



Bottom Solder

PHYSIK INSTITUT UNIVERSITAET ZUERICH WINTERTHURERSTR 190 CH-8057 ZUERICH SWITZERLAND	SYSTEM: DAMIC-M FRONTEND BOARD (BASED ON ADA4817), MK2		
	BOARD NAME: FE_ADA4817_MK2	BOARD NUMBER: PCB240220	REVISION: 1.1
	CREATED: 20-FEB-2024, DANIEL FLORIN	MODIFIED: 17-OCT-2024, DANIEL FLORIN	

1

2

3

4

1

2

3

4

A

A

B

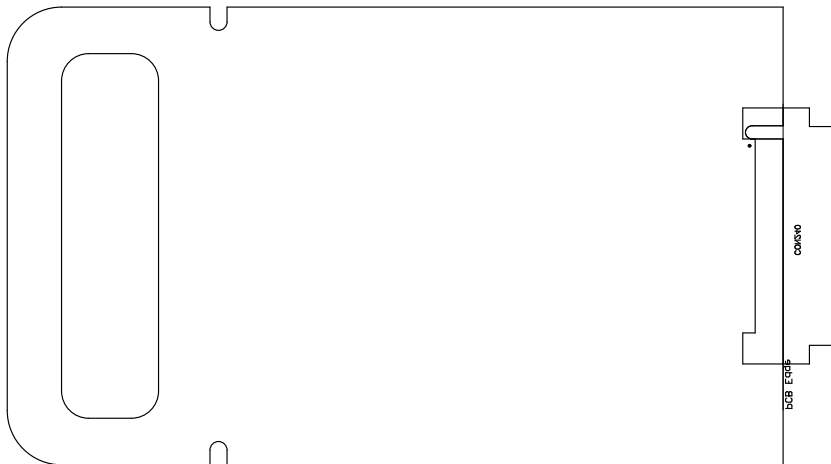
B

C

C

D

D



Bottom Assembly Drawing
 (Bottom Assembly Drawing, NOT printed on PCB)

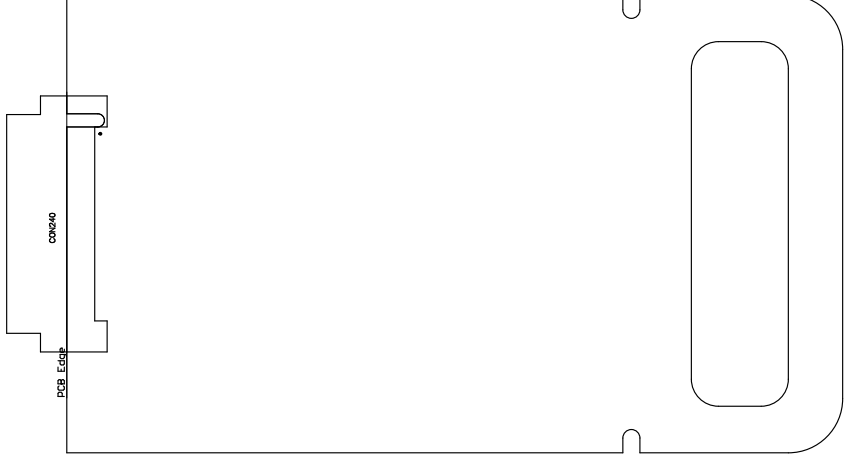
PHYSIK INSTITUT UNIVERSITAET ZUERICH WINTERTHURERSTR 190 CH-8057 ZUERICH SWITZERLAND	SYSTEM: DAMIC-M FRONTEND BOARD (BASED ON ADA4817), MK2		
	BOARD NAME: FE_ADA4817_MK2	BOARD NUMBER: PCB240220	REVISION: 1.1
	CREATED: 20-FEB-2024, DANIEL FLORIN	MODIFIED: 17-OCT-2024, DANIEL FLORIN	

1

2

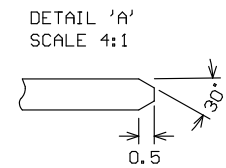
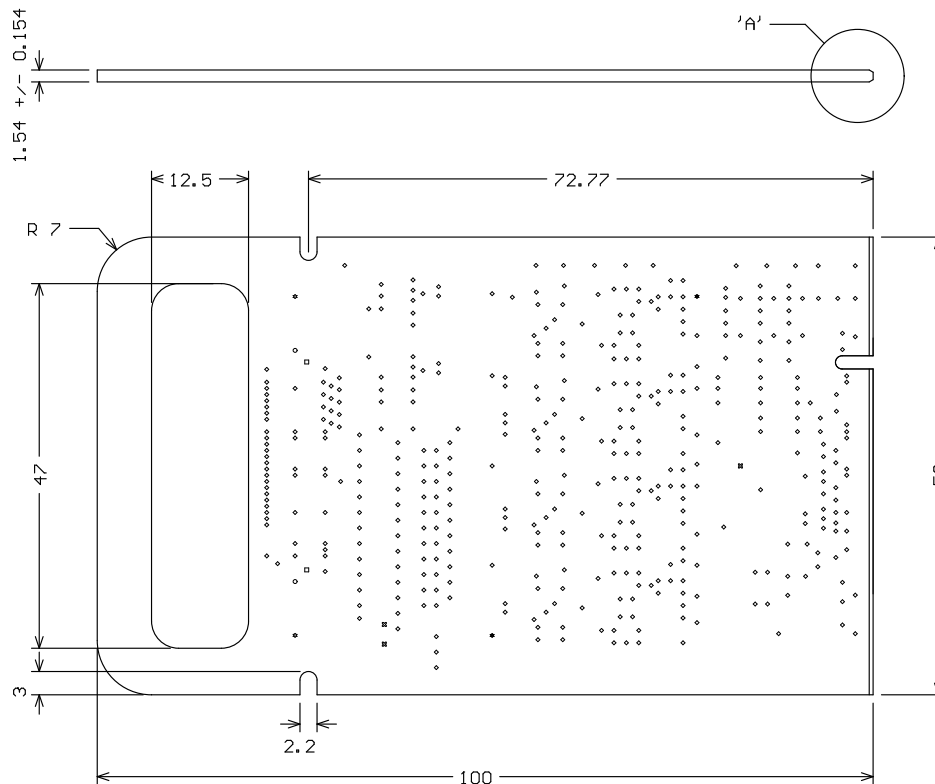
3

4



Bottom Assembly Drawing – Mirrored
 (Bottom Assembly Drawing, NOT printed on PCB)

SWITZERLAND CH-8057 ZÜRICH WINTERTHURSTR 100 UNIVERSITÄT ZÜRICH		PHYSIK INSTITUT	
20-FEB-2024, DANIEL FLORIN CREATED:		17-OCT-2024, DANIEL FLORIN MODIFIED:	
PCB240220	BOARD NUMBER:	FE_ADA4817_MK2	BOARD NAME:
1.1	REVISION:	DAMIC-M FRONTEND BOARD (BASED ON ADA4817) MK2 SYSTEM:	



CAUTION:
Overall board thickness is 1540um, +/- 10%

PCB Fabrication Drawing

Top Silkscreen Legend: White
Top Soldermask: Green (40um)
Top Surface Finish: NiAu (ENIG)

Total 1540um, +/- 10%

Top Layer, Copper Weight 35um (Finished)
Prepreg FR-4, 250um (106 + 7628)
InternalLayer1, Copper Weight 35um
Core FR-4, 250um
InternalLayer2, Copper Weight 35um
Prepreg FR-4, 250um (106 + 7628)
InternalLayer3, Copper Weight 35um
Core FR-4, 250um
InternalLayer4, Copper Weight 35um
Prepreg FR-4, 250um (106 + 7628)
Bottom Layer, Copper Weight 35um (Finished)

Top Surface Finish: NiAu (ENIG)
Bottom Soldermask: Green (40um)
Bottom Silkscreen Legend: No

Layer Stack (Six Layers)

Symbol	Count	Hole Size	Hole Length	Routed Path Length	Plated	Hole Type
✳	2	0.600mm (23.62mil)	1.600mm (62.99mil)	1.000mm (39.37mil)	PTH	Slot
○	2	0.830mm (32.68mil)	-	-	PTH	Round
□	2	1.450mm (57.09mil)	-	-	NPTH	Round
✳	2	4.500mm (177.17mil)	-	-	NPTH	Round
⊗	3	1.000mm (39.37mil)	-	-	PTH	Round
◇	431	0.200mm (7.87mil)	-	-	PTH	Round
	442 Total					

Slot definitions : Routed Path Length = Calculated from tool start centre position to tool end centre position.
Hole Length = Routed Path Length + Tool Size = Slot length as defined in the PCB layout

Drill Drawing

PHYSIK INSTITUT UNIVERSITAET ZUERICH WINTERTHURERSTR 190 CH-8057 ZUERICH SWITZERLAND	SYSTEM: DAMIC-M FRONTEND BOARD (BASED ON ADA4817), MK2		
	BOARD NAME: FE_ADA4817_MK2	BOARD NUMBER: PCB240220	REVISION: 1.1
	CREATED: 20-FEB-2024, DANIEL FLORIN	MODIFIED: 17-OCT-2024, DANIEL FLORIN	