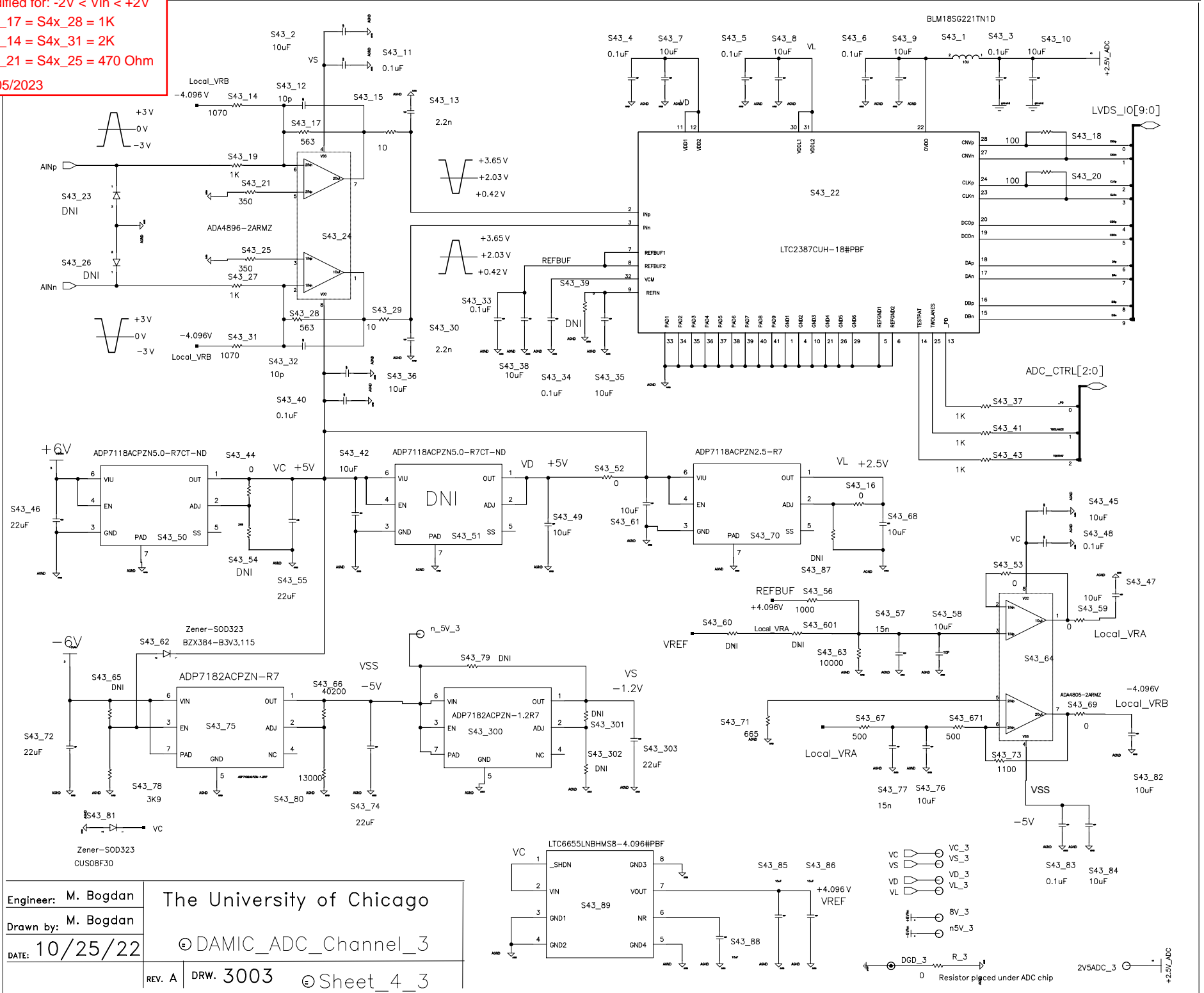


Modified for:  $-2V < V_{in} < +2V$   
 $S4x_{17} = S4x_{28} = 1K$   
 $S4x_{14} = S4x_{31} = 2K$   
 $S4x_{21} = S4x_{25} = 470 \text{ Ohm}$   
 01/05/2023



Engineer: M. Bogdan	The University of Chicago
Drawn by: M. Bogdan	
DATE: 10/25/22	
REV. A	© DAMIC_ADC_Channel_3
DRW. 3003	© Sheet_4_3